

DATA SHEET

| | |
|------------------------------|---|
| Catalog # | AG-10200-256 |
| Cell Line Designation | Prostaglandin E receptor 2 cell line |
| Parental Cell | HEK 293-CNG cell (AG-10200-200) |
| Gene Introduced | Human Prostaglandin E receptor 2 (PTGER2) |
| NCBI Accession # | NP_000947 |

USAGE

- cAMP assay for Gs-coupled human Prostaglandin E receptor 2 (PTGER2).
- HEK293-CNG cells (AG-10200-200) without transfected Prostaglandin E receptor 2 are used as a negative control.

QUALITY CONTROL

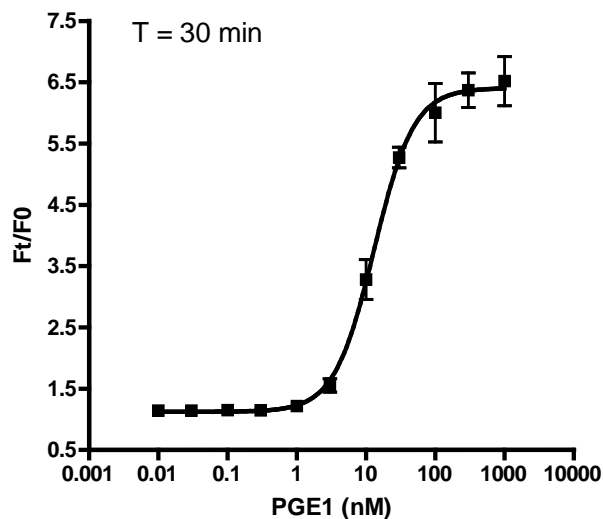
1. This cell line has been tested negative for *Mycoplasma sp.*
2. This cell line has been tested positive for Prostaglandin E receptor 2 specific response.
3. Surviving rate: More than 2.5 million/vial on the second day after thawing.
4. The receptor specific activity is stable for 10 weeks continuous passage.

CELL CULTURE CONDITION

1. Growth medium: 90% DMEM, 10% FBS, 250 μ g/ml G418 and 1 μ g/ml puromycin
2. Freezing medium: 10% DMSO, 90% complete medium

DATA EXAMPLE

A



B

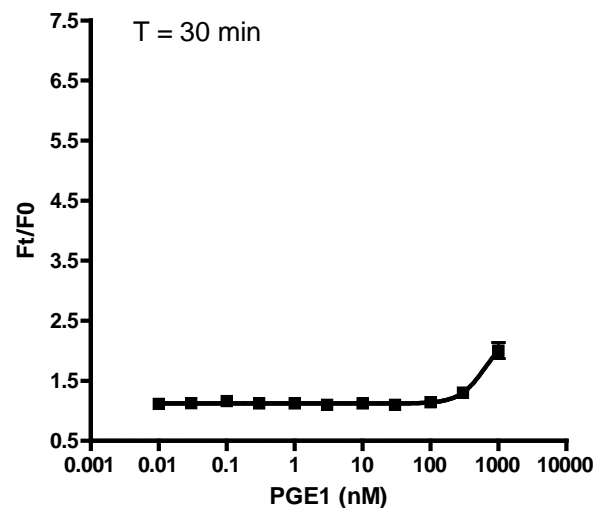


Figure 1. Response of ACTOne PTGER2 cell line & parental cell line to PGE1.

ACTOne PTGER2 cells and parental cells (AG-10200-200) were plated overnight in 20 ml culture medium on a BD Biocoat 384 well plate. The next day, cells were dye-loaded with 20 ml/well of 1X Dye-loading solution (ACTOne Membrane Potential Assay Kit). After 2 hours of incubation at room temperature, two readings were obtained prior to and 30 min after the addition of PGE1. Ratios of the two readings (F/F₀) are plotted in the figure.

- A. Dose response curve of PGE1 in ACTOne PTGER2 cell line. EC₅₀ = 13.0 nM in the absence of PDE inhibitor Ro20-1724.**
- B. Parental cells do not respond to PGE1 in the absence of PDE inhibitor Ro20-1724.**