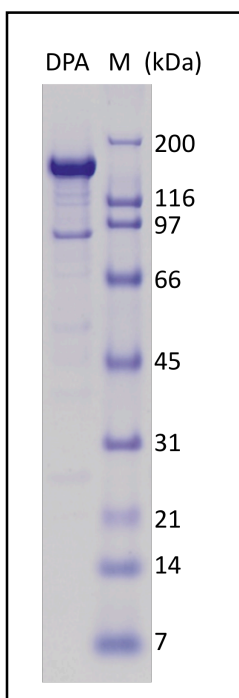


## Recombinant Human DNA Polymerase $\alpha$

Catalog Number	Size
AG320-10	10 $\mu$ g
AG320-25	25 $\mu$ g
AG320-B	Bulk

### Specifications and Use

#### Description



Recombinant human DNA polymerase alpha was expressed in Sf9 cells and purified by an affinity column in combination of other chromatograph methods. The resulted protein is a monomeric polypeptide of 1474 (1462+12) amino acids with a 6His tag at the C-terminus. It migrates in SDS-PAGE with an apparent molecular mass of 170kDa.

```

MAPVHGDDSLSDSGSFVSSRARREKKS KKG RQEALERLKKAKAGEKYKYE
VEDFTGVYEEVDEEQYSKLVQARQDDDWI VDDDGIGYVEDGREIFDDDDLE
DDALDADEKGDGKARNKDKRNVKLA VTKPNNIKSMF IACAGKKTADKA
VDLSKDGLLGDILQDLNTE TPQITPPPV MILKKKRSIGASP NPF SVHTAT
AVPSGKIASPVS RKEPPLTPVPLKRAEFAGDDVQVEST EEEQESGAMFEF
DGD FDEPMEVEEVDLEPMAAKAWDKES E PAEEVQKEADSGKGT VSYLGSF
LPDVSCWDIDQEGDSSFVQEVQVDS SHLPLVKGADEEQV FHFYWLDAEY
DQYNQPGVVFLFGKVVIESAETHVSCCV MVKNIERTLYFLPREMKIDLNT
GKETGTPISMKDVEEFDEK IATKYKIMFKSKPVEKNYAF EIPDVPEKS
EYLEVKYSAEMPQLPQDLKGETFSHVFGTNTS SLELFLMNRKI KGPCWLE
VKSPQLLNQPVSWCKVEAMAL KPDLVNVIKDVSP PPLVVMAFSMKTMQNA
KNHQNEII IAMAALVHHSFALDKAAPK PPFQSHFCV VSKPKDCIFPYAFKE
VIEKKNVKEVAATERTLLGFFLAKVHKIDPDI IVGHNIYGF ELEVLLQR
INVCKAPHWSKIGRLKRSNMPKLGGRSGFGERNATCGRMI CDVEISAKEL
IRCKSYHLSLVQQILKTERV VIPMENIQNMYSESSQLLYLLEHTWKDAK
FILQIMCELNVLPLALQITNIAGNIMSRTL MGGRSERNEFLLLHAFYENN
YIVPDKQIFRKPQQLGDEDEE IDGDTNKYKGRKKAAYAGGLV LDPKVG
FYDKFILLDFNSLYPSIIQE FNICFTTVQRVASEAQKVTEDGEQE QIPE
LPDPSLEMGILPREIRKLVERRKQVKQLMKQD LNPDLILQYDIRQKALK
LTANSMYGCLGFSYSRFYAKPLAALV TYKGREILMHTKEMVQKMNLEVIY
GDTDSIMINTNSTNLEEVFKLGNKVKSE VNKLYKLEIDIDGVFKSLLLL
KKKYYAALVVEPTSDGNYVTKQELKGLDIVRRD WCDLAKDTGNFVIGQIL
SDQSRDTIVENIQKRLIEIGENVLNGSV PVSQFEINKALTKDPQDY PDKK
SLPHVHVALWINSQGGKRVKAGDTVSYVICQDGSNLTASQRAYAPEQLQK
QDNLTI DTQYYLAQQIHPVVARICEPIDGIDAVLIATWLG LDP TQFRVHH
YHKDEENDALLGGPAQLTDEEKYRDCERFKCPCPTCGTENIYDNVFDGSG
TDMEPSLYRCSNIDCKASPLTFTVQLSNK LIMDIRRFIKKYD GWLICEE
PTCRNRTRHLP LQFSRTGPLCPACMKATLQPEYSDKSLY TQLCFYRYIFD
AECAL EKLTDHEKDKLKKQFFTPKVLQDYRKLKNTAEQFLSRSGYSEVN
LSKLFAGCAVKS GGGVDGHHHHHH*
  
```

**Accession Number** NP\_016937

**Source** Sf9

**Molecular Mass** Approximately 170kDa.

**Purity**  $\geq$ 90%, as determined by SDS-PAGE.

**Biological Activity** Human DNA polymerase  $\alpha$  is the catalytic subunit of DNA polymerase and plays an essential role in the initiation of DNA replication.

**Formulation** 20mM Tris-Cl, pH7.9, 20% glycerol, 100mM NaCl, 1mM DTT and 1mM EDTA.

**Storage** The protein sample can be stored under sterile conditions at 2-8°C for one month or at -20°C to -80°C for three months without detectable loss of activity.

**Special Notes** **FOR RESEARCH USE ONLY**