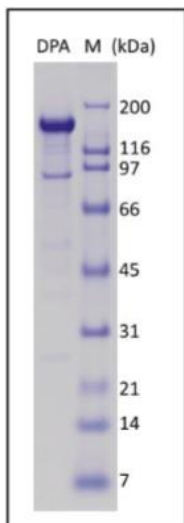


## Recombinant Human DNA Polymerase $\alpha$

Catalog Number	Size
AG320-10	10ug
AG320-25	25ug
AG320-B	Bulk

### Specifications and Use

#### Description



Recombinant human DNA polymerase alpha was expressed in Sf9 cells and purified by an affinity column in combination of other chromatograph methods. The resulted protein is a monomeric polypeptide of 1474 (1462+12) amino acids with a 6His tag at the C-terminus. It migrates in SDS-PAGE with an apparent molecular mass of 170kDa.

```
MAPVHGDDSLSDSGSFVSSRARREKSKKGRQEALERLKKAKAGEKYKYVEDEFTGVYEEVDDEEQYSKLVQAR
QDDDWIVDDGIGYVEDGREIFDDDDLEDDALDADEKKGKDKARNKDKRNVKLLAVTKPNNIKSMFIACAGKKT
ADKAVDLSKDGLLDGDLQDLNTEPQITPPVMI LKKKRSIGASPNPFSVHTATAVPSGKIASVSRKEPPLT
PVPLKRAEFAGDDVQVESTEEEQESGAMEFEDGDFDEPMEVEEVDLEPMAAKAWDKSEPAEEVKQEADSGKG
TVSYLGSFLPDVSCWDIDQEGDSSFVQEVQVDSHSLPLVKGADEEQVFHFYWLDAEDQYNQPGVVFLFGKV
WIESAETHVSCCVMKNIERTLYFLPREMKIDLNTGKETGTPI SMKDVEEYEFDEKIATKYKIMFKSKPVEKN
YAFEIPDVPEKSEYLEVKYSAEMPQLPQDLKGETFSHVFGTNTSSLELFLMNRKIKGPCWLEVKSPQLLNQPV
SWCKVEAMALPKPDLVNVIKDVSPPPLVVMFAFSMKTMQNAKNHQNIEI IAMAALVHHSFALDKAAPKPPFQSHFC
VVS KPKDCIFPYAFKEVIEKKNVKEVAATERTLLGFFLAKVHKIDPDI IVGHNIYGFEEVLLQRINVCKAP
HWSKIGRLKRSNMPKLGGRSGFGERNATCGRMICDVEISAKELIRCKSYHLSLVQQILKTERVVI PMENIQN
MYSESSQLLYLLEHTWKDAKFI LQIMCELNVLPALQITNIAGNIMSRITLMGGRSERNEFLLLHAFYENNYIV
PDKQIFRKPQQKLGDEDEEIDGDTNKYKKGKKAAYAGGLVLDPKVGFYDKFILLLLDFNSLYPSIIQEFNICF
TTVQRVASEAQKVTEDGEQEQIPELDPDSLEMGILPREIRKLVERRKQVKQLMKQDLNPDLLIQYDIRQKAL
KLTANSMYGCGLGFSYSRFYAKPLAALVTYKREI LMHTKEMVQKMNLEVI YGDTDSIMINTNSTNLEEVEFKLG
NKVKSEVNKLYKLEIDIDGVFKSLLLLKKKYAALVVEPTSDGNYVTQKELKGLDIVRRDWCDLAKDTGNFV
IGQILSDQSRDITVENIQKRLIEIGENVLNGSVVPSQFEINKALTKDPQDYPDKKSLPHVHVALWINSQGRK
VKAGDTSVSYVICQDGSNLTASQRAYAPEQLQKQDNLTIDTQYYLAQQIHPVVARICEPIDGIDAVLIATWLGL
DPTQFRVHHYHKDEENDALLGGPAQLTDEEKYRDCERFKCPCPTCGTENIYDNVFDGSGTDMEPSLYRCSNID
CKASPLTFTVQLSNKLMIDIRRFIKKYDGLWICEEPTCRNRTRHLPLOFRTGPLCPACMKATLQPEYSDKS
LYTQLCFYRYIFDAECALEKLTDDHEKDKLKKQFFTPKVLQDYRKLKNTAEQFLSRSGYSEVNLSKLFAGCAV
KSGGGVDGHHHHHH*
```

**Accession Number**

NP\_016937

**Source**

Sf9

**Molecular Mass**

Approximately 170kDa.

**Purity**

≥90%, as determined by SDS-PAGE

**Biological Activity**

Human DNA polymerase a is the catalytic subunit of DNA polymerase and plays an essential role in the initiation of DNA replication.

**Formulation**

20mM Tris-Cl, pH7.9, 20% glycerol, 100mM NaCl, 1mM DTT and 1mM EDTA.

**Storage**

The protein sample can be stored under sterile conditions at 2-8° C for one month or at -80° C for 12 months without detectable loss of activity.  
Avoid repeated thaw-freeze cycles.

**Special Notes**

**FOR RESEARCH ONLY**