

# Recombinant SARS-CoV2 3CL Protease

Catalog Number: AG1921/Lot#033020G

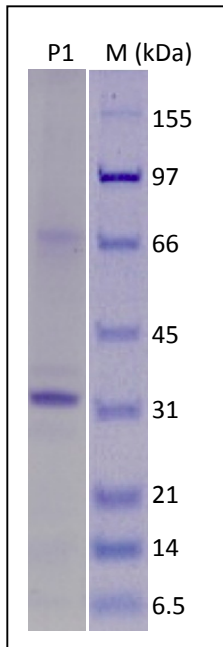
Strength: 20µg, 100ug, 1mg

Accession: YP\_009725301

## Specifications and Use

### Description

Recombinant 3-chymotrypsin-like (3CL) protease of the novel coronavirus (SARS-CoV2) was expressed in E coli cells and purified by an affinity column in combination of other chromatograph methods. The resulted protein is a monomeric polypeptide of 317 (306+11) amino acids with a 6His tag at the C-terminus. It migrates in SDS-PAGE with an apparent molecular mass of 34kDa.



```
MMSGFRKMAFPSPGKVEGCMVQVTCGTTTLNGLWLDDVVYCPRHVICTSEDM  
LNPNYEDLLIRKSNHNFLVQAGNVQLRVIGHSMQNCVLKLVDTANPKTP  
KYKfVRIQPGQTFsvLACYNGSPSGVYQCAMRPNFTIKGSFLNGSCGSVG  
FNIDYDCVSFCYMHMELPTGVHAGTDLEGNFYGPFVDRQTAQAAGTDTT  
ITVNVLAWLYAAVINGDRWFLNRF'T'TLNDNFLVAMKYNYEPLTQDHVDI  
LGPLSAQTGIAVLDMCASLKELLQNGMNGRTILGSALLEDEFTPFVVRQ  
CSGVTFQGGGHHHHHH*
```

### Source

*E coli*

### Molecular Mass

Approximately 34kD.

### Purity

≥90%, as determined by SDS-PAGE.

### Biological Activity

Recombinant 3CL protease of SARS-CoV2 is suitable for screening its inhibitors and other related function assays.

### Formulation

20mM Tris-Cl, pH7.9, 20% glycerol, 100mM NaCl, 1mM DTT and 0.5mM EDTA.

### Storage

The protein sample can be stored under sterile conditions at 2-8°C for one month or at -20°C to -70°C for three months without detectable loss of activity.

**FOR RESEARCH USE ONLY!!!**