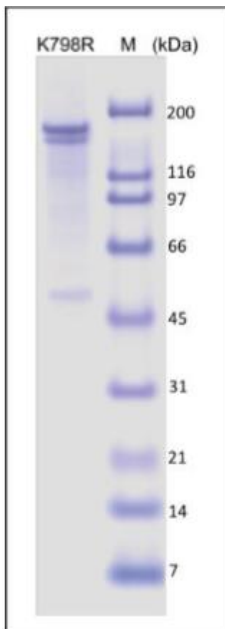


Recombinant Human BRG1/SMARCA4

Catalog Number	Size
AG317-10	10ug
AG317-25	25ug
AG317-B	Bulk

Specifications and Use

Description



The human brahma-related gene 1 (BRG1/SMARCA4/BAF190) is a catalytic subunit of SWI/SNF complexes that regulate transcription by mediating ATP-dependent chromatin remodeling processes. Mutation of lysine residue 798 un the DNA dependent ATase domain significantly reduced its ability to repress c-fos transcription. Recombinant BRG1 (K798R) was produced in Sf9 cells with a 6His tag at the N-terminus. The mutant K798R was originally created for yeast BRG1 (accession# P22082), which corresponds to human BRG1 K785R as indicated (Laurent et al., 1993, *Genes & Dev* 7, 583-591).

```
MSTPDPPLGGTTPRPGSPGPGSPGAMLGPSGPGSPGSAHSMMGPSGPPSAGHPIPTQGGPGYPQDNMHQMHKPMESMHEKGMSDDPRY  
NQMKGMGRSGGHAGMGPPPSPMDQHSQGYPSPLGGSEHASSPVPASGSSGPQMSGPGGAPLGDGADPQALGQQNRGPTPFNQNLH  
QLRAQIMAYKMLARGQPLPDHLQMAVQGKRPMGPMQMQMPTLPPPSVSATGPGPGPGPGPGPAPPNNYSRPHGMGGPNMPPGPGSG  
VPPGMPGQPPGPGPKPWPEGPMANAAAPTSTPQKLIPTGRPSPAPPVPPAASVMPPTQTSPQGPQAQAPAMPVPLHQKQSRITPIQKPR  
GLDPVEILQEREYRQLQARIAHRIQELENLPGSLAGDLRTKATIELKALRLLNFQRQLRQEVVCMRRDTALETALNAKAYKRKRQSLREA  
RITEKLEKQKQIEQERKRRQKHQEYLNLSILQHAKDFKEYHRSVTGKIQLTKAVATYHANTEREQKKENERIEKERMRRLMAEDEEGYRK  
LIDQKKDKRLAYLLQQTDEYVANLTELVRQHAAQVAKEKFKKKKKAENAEGQTPAIGPDGEPLDETSQMSDLPVKVIHVESGKILT  
GTDAPKAGQLEAWLEMNPGYEVAPRSDESESEEEEEEEEPQAAQPPTLPVEEKKIPDPDSDVSEVDARHIENAKQDVDEYGV  
SQALARGLQSYAVAHAVTERVDKQSAALMVNGLKQYQIKGLEWLVSLYNNLNGILADEMGLGRITQIATIALITLMEHKRINGPFLIIVP  
LSTLSNWAYEFDKWAPSVVKVSYKGSAAARRAFVPLRSGKFVLLTTYEYIHKDHILAKIRWKYMIVDEGHRMKNHHCCLTQVFNTH  
YVAPRRLLLTGTPLQNKLELWALLNFLTIFKSCSTFEQWFNAPFAMTGEKVDLNEEETILIRLHKVLRPFLRLRLKKEVAQLPEKVE  
YVIKCDMSALQRVLYRHMQAQGVLLTDGSEKDKKGGGKTLMTIMQLRKCINHPYMFQIIEESFELGFTGGIVQGLDLYRASKGFE  
LLDRILPKLRATNHNKLVLLFCQMTSLTIMEDYFAYRGFKYLRLDGTTKAEDRGMLLKTFNPEGSEYFIFLLSTRAGLGLNLQASADTVIIFD  
SDWNPQDLQAQDRAHRIGQQNEVRVLRRLCTVNSVEEKILAAKYKLVNDQKVIQAGMFDQKSSSHERRAFLQAILHEEEQDES RHCSTG  
SGSASFAHTAPPPAGVNPDEPLEEKDEEVPDDET VNQMIARHEEEFDL FMRMDLDRRREEARNPKRKRPMLEEDLPSWIKKDAAEVER  
LTCEEEEEMFGRGRSRHKEVDYSDSLTEKQWLKAIIEEGTLEIEIEEVRQKSSRRKRKRDSDAGSPTTSTRSRDKDDESKKQKGRPP  
AEKLSPPNPPLTKMKKIVDAVIKYKDDSSSRLQSEVFIQPSRKELPEYELIRKVPDFKKIKERIRNHKYRSLNLEKDVMLLCQNAQTF  
NLEGLSIVLVQSVFTSVRKQIEKEDDSEGESESESESESESESESESESESESESRVVKIKIQLGRKEKAQDRLLKGGRRRRPSRGRSAKPVVDDDDSE  
EEQEEDRS GSGSEED
```

Accession Number	NM_003072
Source	Sf9
Molecular Mass	~190kDa
Purity	≥95%, as determined by SDS-PAGE
Biological Activity	Recombinant human BRG protein is ideal for the studies of protein-protein interactions and other related function assays.
Formulation	20mM Tris-Cl (pH7.9), 20% Glycerol, 100mM NaCl, 1mM DTT and 0.5mM EDTA
Storage	The protein sample can be stored under sterile conditions at 2- 8 oC for one month or at -70oC for three months without detectable loss of activity. Avoid repeated freeze-thaw cycles
Special Notes	FOR RESEARCH ONLY