

Recombinant SARS-CoV2 Envelope (E) Protein

Catalog Number: AG1904E/Lot#112120G

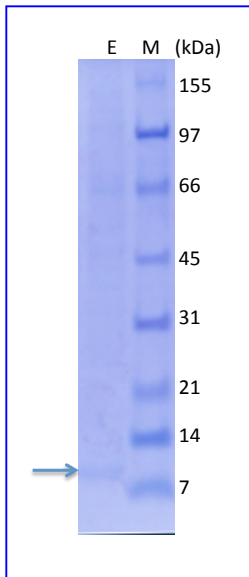
Strength: 10µg, 25ug, 1mg

Accession: YP_009724392

Specifications and Use

Description

Recombinant envelope (E) protein of the novel coronavirus (SARS-CoV2) was expressed in E coli cells and purified by an affinity column in combination of other chromatograph methods. The resulted protein is a monomeric polypeptide of 86 (75+11) amino acids with a 6His tag at the C-terminus. It migrates in SDS-PAGE with an apparent molecular mass of 10kDa.



MYSFVSEETGTLIVNSVLLFLAFVVFLVTLAILTALRLCAYCCNIVNVS
LVKPSFYVYSRVKKNLNSSRVPDLLVGGGLEHHHHHH*

Source

E coli

Molecular Mass

Approximately 9.6kD.

Purity

≥90%, as determined by SDS-PAGE.

Biological Activity

Recombinant envelope protein of SARS-CoV2 is suitable for the studies of antibody generation and other related function assays.

Formulation

20mM Tris-Cl, pH7.9, 20% glycerol, 100mM NaCl, 1mM DTT and 0.5mM EDTA.

Storage

The protein sample can be stored under sterile conditions at 2-8°C for one month or at -20°C to -70°C for three months without detectable loss of activity.

FOR RESEARCH USE ONLY!!!