

Recombinant MERS 3CL Protease

Catalog Number: AG1923/Lot#033020G

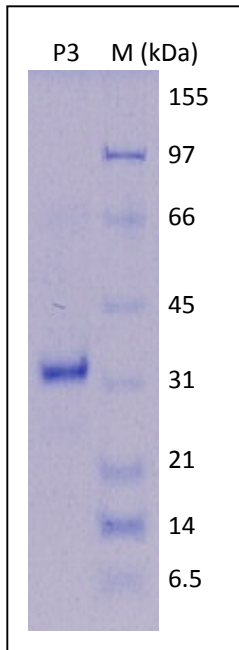
Strength: 20µg, 100ug, 1mg

Accession: YP_00904217

Specifications and Use

Description

Recombinant 3-chymotrypsin-like (3CL) protease of the MERS was expressed in *E coli* cells and purified by an affinity column in combination of other chromatograph methods. The resulted protein is a monomeric polypeptide of 312 (301+11) amino acids with a 6His tag at the C-terminus. It migrates in SDS-PAGE with an apparent molecular mass of 33kDa (P3).



```
MSGLVKMSHPSGDVEACMVQVTCGSMTLNGLWLDNTVWCPRHVMCPADQL  
SDPNYDALLISMTNHSFSVQKHIGAPANLRVVGHAMQGTLLKLTVDVANP  
STPAYTFTTVKPGAAFSVLACYNGRPTGTFTVVMRPNYTIKGSFLCGSCG  
SVGYTKEGSVINFCYMHQMELANGTHTGSAFDGTMYGAFMDKQVHQVQLT  
DKYCSVNVVAVLYAAILNGCAWFVKPNRTSVVSFNEWALANQFTEFVGTQ  
SVDMLAVKTGVAIEQLLYAIQQLYTGFGQKQILGSTMLEDEFTPEDVNMQ  
GGGLEHHHHHHH*
```

Source

E coli

Molecular Mass

Approximately 33kD.

Purity

≥90%, as determined by SDS-PAGE.

Biological Activity

Recombinant 3CL protease of MERS is suitable for screening its inhibitors and other related function assays.

Formulation

20mM Tris-Cl, pH7.9, 20% glycerol, 100mM NaCl, 1mM DTT and 0.5mM EDTA.

Storage

The protein sample can be stored under sterile conditions at 2-8°C for one month or at -20°C to -70°C for three months without detectable loss of activity.

FOR RESEARCH USE ONLY!!!